

Q.HOME EDRIVE-G1

COMPACT AND UNIVERSAL,
MOBILE HIGH-END CHARGER
FOR ELECTRIC VEHICLES



The charging station can do everything a permanently installed charging station can do, but is extremely compact and universal in use. The Q.HOME EDRIVE-G1 lets you charge everywhere, at any socket and almost any electric car.



EASY SETUP

5-minute setup using smartphone app via WLAN



PLUG & PLAY

Easy installation for all common sockets in Europe and rapid disassembly thanks to quick-release wall bracket.



UNBEATABLE HARDWARE

High charging capacity to 22kW with matching type 2 plug. Type 1 plug can be connected via adapter.



SMART CONTROL

Connection via the Internet or directly via hotspot, with free app for detailed settings.



COMPACT TECHNOLOGY

The integrated fault-current circuit breaker saves retrofitting of type B earth-leakage protection in building technology.

THE IDEAL SOLUTION FOR:



Private households

Engineered in Germany

Q CELLS

TECHNICAL DATA

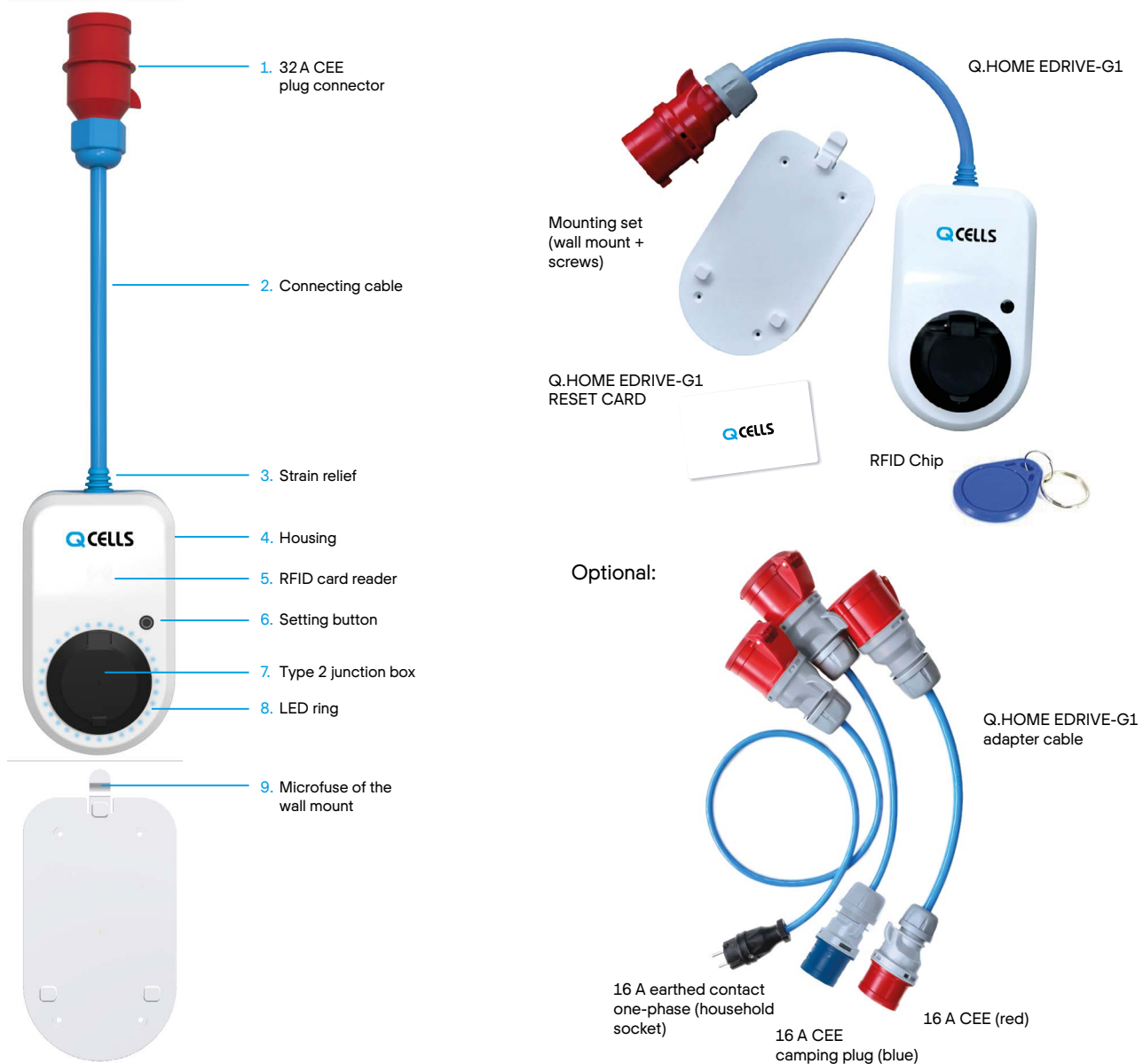
Dimensions	150 mm × 250 mm × 90 mm
Weight	2.0 kg
Protection class	IP54
Charging capacity	Three-phase to 22 kW (6 A-32 A)
Installation	CEE red 32 A three-phase, 30 cm cable length

CONNECTIONS

Charge box connection	CEE red 32 A (3-phase)
	With optional adapters (not included in scope of supply): <ul style="list-style-type: none"> • CEE red 16 A (3-phase) • CEE blue 16 A (1-phase, camping plug) • Safety plug 16 A (1-phase, household socket)
Vehicle connection	<ul style="list-style-type: none"> • Type 2 socket with lock (Type 2 cable not included in scope of supply) • Type 1 with adapter or Type 2 on Type 1 cable

USER INTERFACES

Configuration	Via app with smartphone
Status LEDs	Ampere and status display readable via LED ring or app
Access control	Via RFID chips
Switch	Charging capacity controllable at the touch of a button



Hanwha Q CELLS GmbH

Sonnenallee 17-21, 06766 Bitterfeld-Wolfen, Germany | TEL +49 (0)3494 66 99-23444 | FAX +49 (0)3494 66 99-23000 | EMAIL sales@q-cells.com | WEB www.q-cells.com

Engineered in Germany

Q CELLS